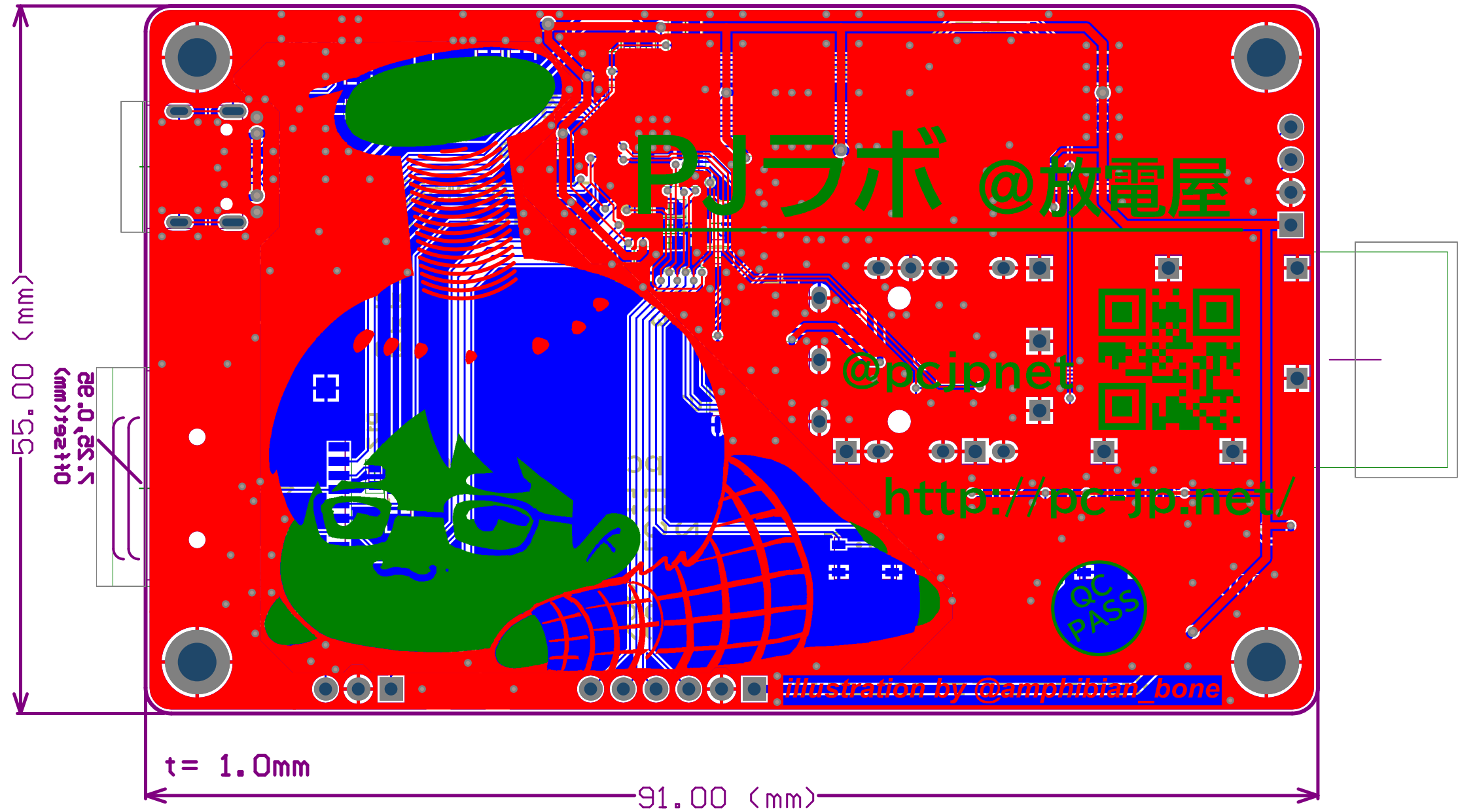


Title			@pcjnet PCB Card Rev1.0		
Size	A4	Number		Revision	
Date:	2023/10/03		Sheet of		
File:	C:\Users\...\Business_Card_v1.SchDoc		Drawn By:		



PJラボ @放電屋

@pcjpnet

<http://pc-jp.net/>

Illustration by @amphibian\_bone

55.00 (mm)

91.00 (mm)

t = 1.0mm

28.0 (mm)  
5.52 (mm)

PC  
PASS

Comment	Description	Designator	Footprint	LibRef	Quantity	Value
CAP_3216	Capacitor 3216	C1, C2, C3, C4, C5, C6	C3216_N	CAP_3216	6	47uF
CAP_1608	Capacitor 1608	C7, C8	C1608_N	CAP_1608	2	1uF
CAP_1608	Capacitor 1608	C9, C10	C1608_N	CAP_1608	2	15pF
CAP_1608	Capacitor 1608	C11, C12, C13, C14, C15, C16, C17, C18, C19, C20, C21, C22, C23, C24	C1608_N	CAP_1608	14	0.1uF
SS2040FL	Schottky Rectifier SOD-123FL	D1	SOD-123F_N	SS2040FL	1	
USB-C_2.0	USB-C (USB TYPE-C) USB 2.0 Receptacle Connector 24 (16+8 Dummy) Position Surface Mount, Right Angle, Through Hole	J1	USB_TYPE-C_2.0	USB-C_2.0	1	
TransFlash	TransFlash	J2	TransFlash	TransFlash	1	
SFP	SFP	J3	SFP	SFP	1	
LED_1608	Typical 1608 LED	LED1, LED2, LED3, LED4, LED PW	LED_1608_N	LED_1608	5	
1X4_HEADER	Header, 4-Pin	P1	HEADER_1X4_N	1X4_HEADER	1	
1X6_HEADER	Header, 6-Pin	P2	HEADER_1X6_N	1X6_HEADER	1	
1X3_HEADER	Header, 3-Pin	P3	HEADER_1X3_N	1X3_HEADER	1	
SH-3H	Header, 3-Pin	P4	SH-3_HORIZONTAL	SH-3H	1	
AZ1117CH-3.3	Linear Voltage Regulator IC Positive Fixed 1 Output 1A SOT-223-3	PS1	SOT-223_N	AZ1117CH-3.3TRG1	1	
RES_1608	Resistor 1608	R1, R2	R1608_N	RES_1608	2	27.4
RES_1608	Resistor 1608	R3, R4	R1608_N	RES_1608	2	5.1K
RES_1608	Resistor 1608	R5, R9, R17, R18, R19, R20, R21, R22, R25, R27, R28	R1608_N	RES_1608	11	10K
RES_1608	Resistor 1608	R6	R1608_N	RES_1608	1	NC
RES_1608	Resistor 1608	R7, R10, R11, R12, R13, R14, R26	R1608_N	RES_1608	7	1K
RES_1608	Resistor 1608	R8	R1608_N	RES_1608	1	5.6K
RES_1608	Resistor 1608	R15, R16	R1608_N	RES_1608	2	4.7K
RES_1608	Resistor 1608	R23	R1608_N	RES_1608	1	100
RES_1608	Resistor 1608	R24	R1608_N	RES_1608	1	20K
SMD-SKRP	SPST-NO, Switch Tactile, SKRP, PTS810, WS-TASV, CS1215, TS20, TL3365	SW1, SW2, SW3	SKRP	SMD-SKRP	3	
RP2040	IC MCU 32BIT EXT MEM 56QFN	U1	RP2040	RP2040	1	
W25Q16JVSNIQ	SOIC 150mil 3V 16M-Bit Serial Flash Memory With Dual/Quad SPI	U2	SOIC-8_N	W25Q16JVSNIQ	1	
FIN1019MTCX	3.3V LVDS High Speed Differential Driver/Receiver	U3	TSSOP-14_N	FIN1019MTCX	1	
ATECC608B-SSHDA	IC AUTHENTICATION CHIP I2C 8SOIC	U4	SOIC-8_N	ATECC608B-SSHDA	1	
XTAL4_3225	Crystal , OSC_3225 Oscillator Package	Y1	OSC_3225	XTAL4_3225	1	12MHz